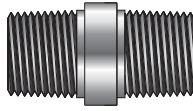
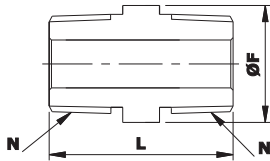


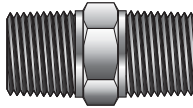
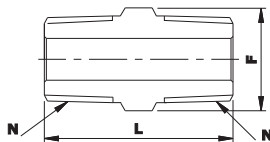


Pipe Nipple__NPT(M) x NPT(M)



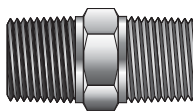
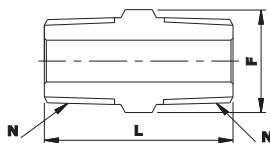
COMFIT PRODUCT CODE	NPT MALE (N)	LENGTH (L)	(ØF)	Working Pressure (PSIG) STAINLESS STEEL
	(Inch)			
1-CPN	1/16	0.75	5/16	10000
2-CPN	1/8	0.75	7/16	9100
4-CPN	1/4	1.12	9/16	7500
6-CPN	3/8	1.12	11/16	7200
8-CPN	1/2	1.50	7/8	6600
12-CPN	3/4	1.50	1-1/16	6400
16-CPN	1	1.88	1-3/8	4600

Hex Nipple__NPT(M) x NPT(M)



COMFIT PRODUCT CODE	NPT MALE (N)	LENGTH (L)	HEX (F)	Working Pressure (PSIG) STAINLESS STEEL
	(Inch)			
1-CPHN	1/16	1.01	7/16	10000
2-CPHN	1/8	1.01	7/16	9100
4-CPHN	1/4	1.40	5/8	7500
6-CPHN	3/8	1.43	3/4	7200
8-CPHN	1/2	1.84	7/8	6600
12-CPHN	3/4	1.84	1-1/8	6400
16-CPHN	1	2.32	1-3/8	4600
20-CPHN	1-1/4	2.41	1-3/4	3500
24-CPHN	1-1/2	2.65	2	2900
32-CPHN	2	2.90	2-3/4	

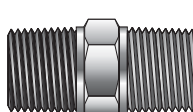
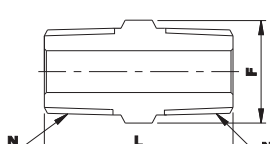
Hex Nipple- (RS__NPT(M) x ISOP(M))



COMFIT PRODUCT CODE	NPT MALE (N)	ISO MALE (N1)	LENGTH (L)	(B)	HEX (F)	Working Pressure (PSIG) STAINLESS STEEL
	(Inch)	(Inch)				
2-CPHN-2RS	1/8	1/8	1.07	0.28	9/16	9100
4-CPHN-4RS	1/4	1/4	1.44	0.44	3/4	7500
6-CPHN-6RS	3/8	3/8	1.47	0.44	7/8	7200
8-CPHN-8RS	1/2	1/2	1.78	0.56	1-1/16	6600
12-CPHN-12RS	3/4	3/4	1.95	0.62	1-5/16	6400
16-CPHN-16RS	1	1	2.26	0.72	1-5/8	4600

1) RS parallel threads are commonly used with flat RP gasket, please refer page no. 29

Hex Reducing Nipple__NPT(M) x NPT(M)



COMFIT PRODUCT CODE	NPT MALE (N)	NPT (N1)	LENGTH (L)	HEX (F)	Working Pressure (PSIG) STAINLESS STEEL
	(Inch)	(Inch)			
2-CPHRN-1	1/8	1/16	1.01	7/16	9100
4-CPHRN-1	1/4	1/16	1.25	5/8	7500
4-CPHRN-2	1/4	1/8	1.22	5/8	7500
6-CPHRN-1	3/8	1/16	1.27	3/4	7200
6-CPHRN-2	3/8	1/8	1.25	3/4	7200
6-CPHRN-4	3/8	1/4	1.43	3/4	7200
8-CPHRN-2	1/2	1/8	1.47	7/8	6600
8-CPHRN-4	1/2	1/4	1.65	7/8	6600
8-CPHRN-6	1/2	3/8	1.65	7/8	6600
12-CPHRN-2	3/4	1/8	1.59	1-1/8	6400
12-CPHRN-4	3/4	1/4	1.65	1-1/8	6400
12-CPHRN-6	3/4	3/8	1.78	1-1/8	6400
12-CPHRN-8	3/4	1/2	1.84	1-1/8	6400
16-CPHRN-2	1	1/8	1.78	1-3/8	4600
16-CPHRN-4	1	1/4	1.97	1-3/8	4600
16-CPHRN-8	1	1/2	2.13	1-3/8	4600
16-CPHRN-12	1	3/4	2.13	1-3/8	4600
20-CPHRN-16	1-1/4	1	2.41	1-3/4	3500
24-CPHRN-16	1-1/2	1	2.56	2	2900
32-CPHRN-16	2	1	2.78	2-3/4	

DIMENSIONS FOR REFERENCE ONLY, SUBJECT TO CHANGE.